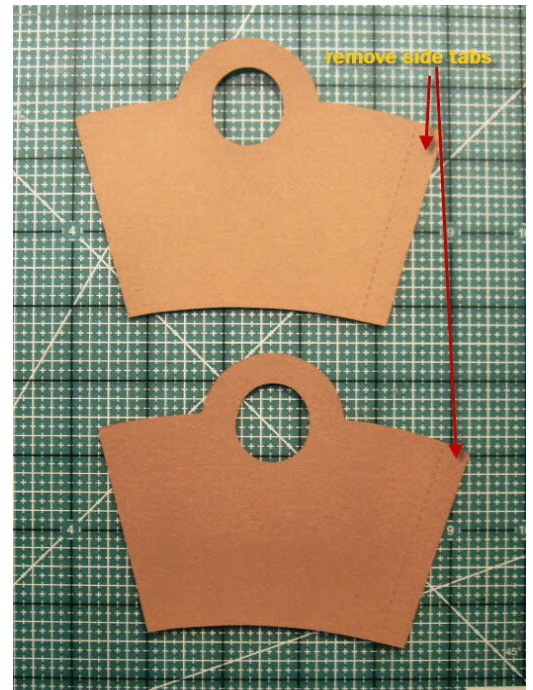


# Mini Treat Basket October, 2009 Make & Take

Using the Baskets and Blooms die:

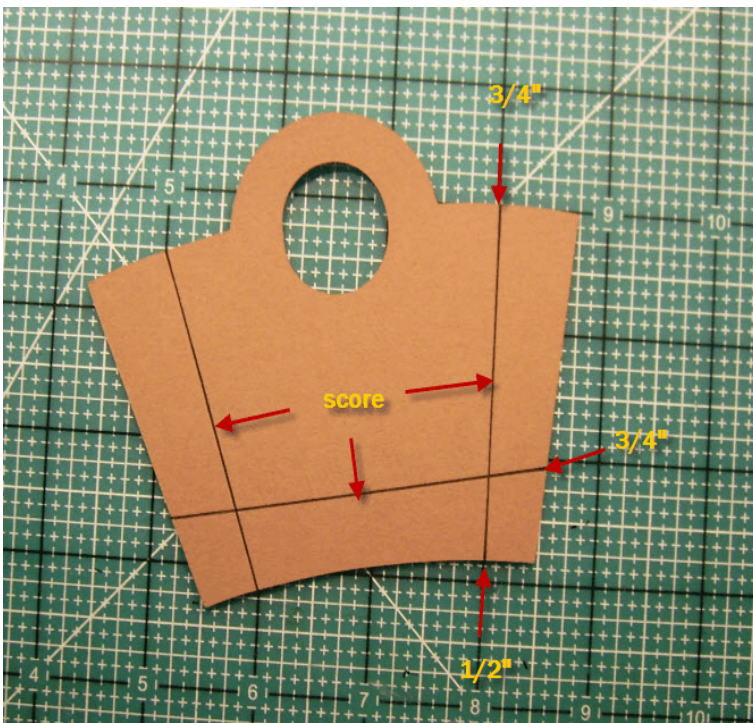


I cut my paper 4 1/4 x 5 1/2. You will have some miscellaneous pieces on the top edge.

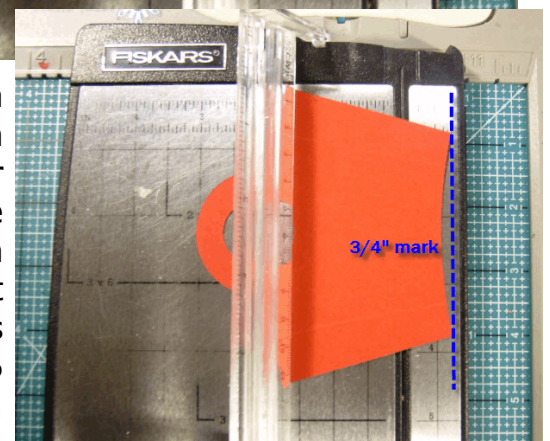
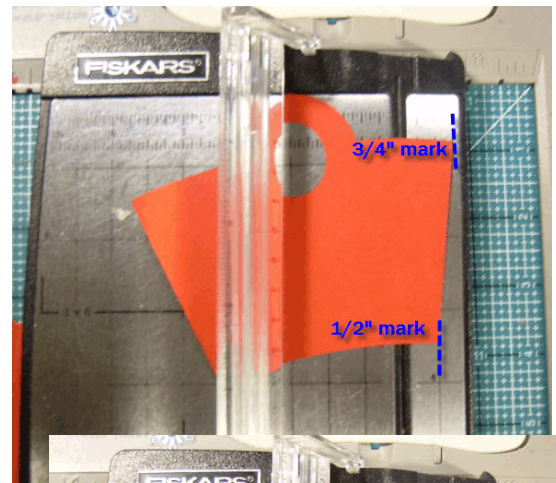


▲ Remove the side tabs. ▲

▼ Score sides and bottom as shown. ▼

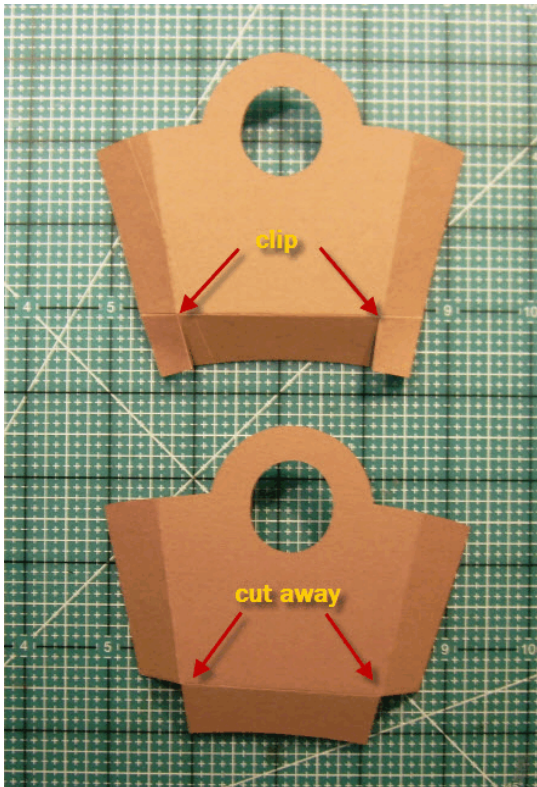


I drew a line on my cutter at the 3/4 in mark that extends down 6 inches.

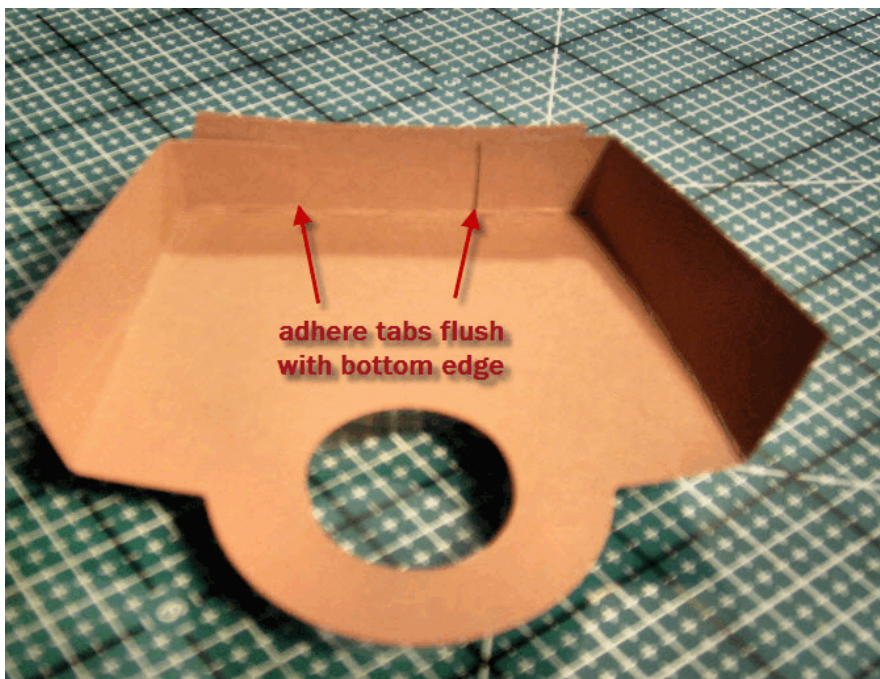
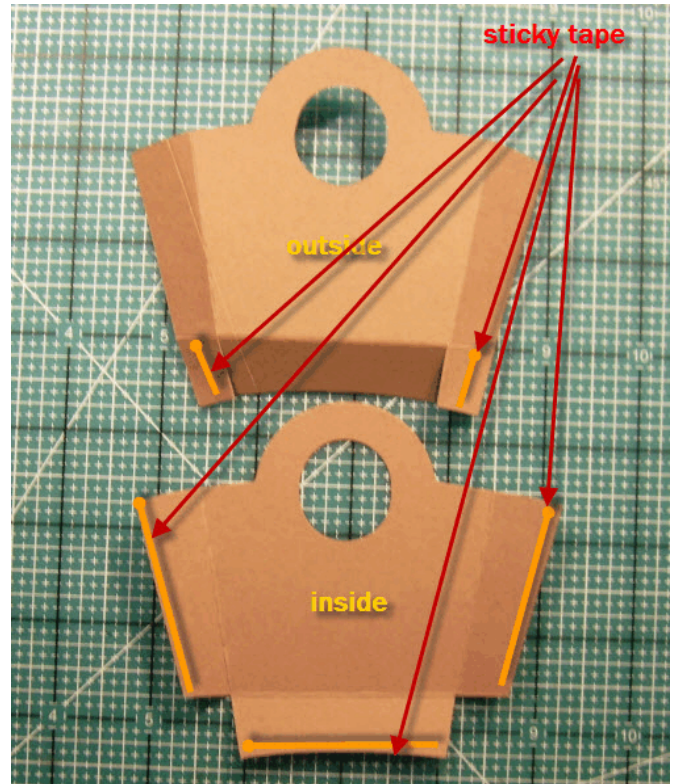




Clip and cut your pieces.

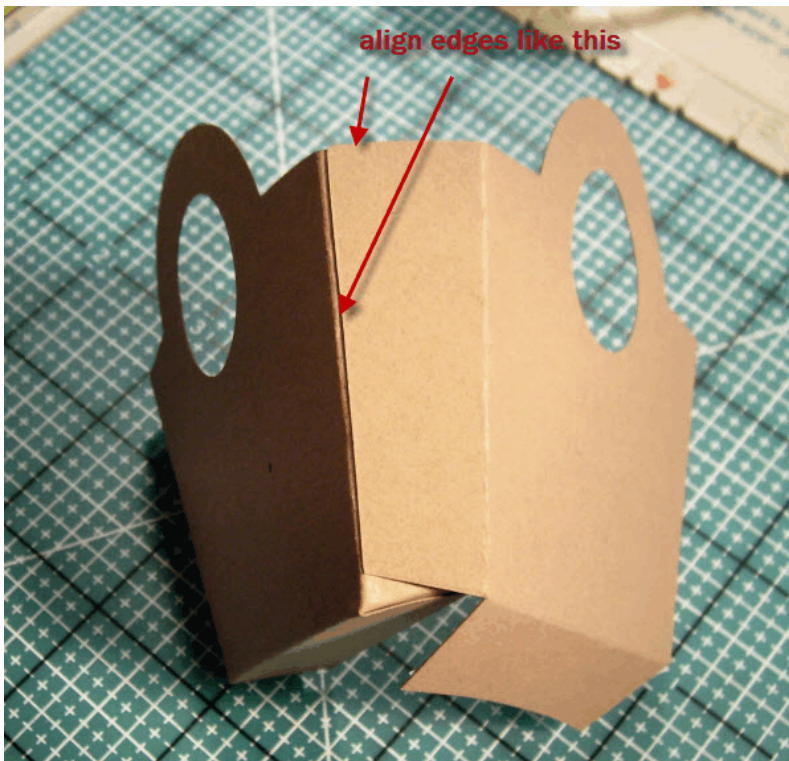


Apply sticky tape. I don't recommend using snail for baskets and boxes - too much stress on the seams.



Adhere bottom tabs as close as possible to the bottom edge. This is really important to correctly shape the basket.





Align top and side edges. Your bottom edge will not match exactly.

Decorate, stuff with goodies and give away to your friends and family!

